



Delivery Program

Rotary screens for textile printing,
engraving chemicals and endrings.

NovaScreen®

Types Repeat (cm)	Mesh	Thickness (µm)	Open Area (%)	Hole diameter (µm)	1280	1620	1850	1850	2250	2400	2800	2800	3200
					1410	1750	1980	2080	2380	2650	2940	3050	3500
					1398.5	1738.5	1968.5		2368.5	2518.5	2918.5	2970	3418.5
64	135	105	24	92	10	10	10						
64	135ED	120	22	88	10	10	10	10	10	10	10	10	10
64	165ED	115	19	67	10	10	10	10	10	10	10	10	10
64	195ED	115	16	52	10	10	10	10	5	5	5	5	5
64	195HD	115	19	57	10	10	10						
68.8	135ED	120	22	88	10	10	10	10	10	10	10	10	10
68.8	165ED	115	19	67	10	10	10	10	10	10	10	10	10
68.8	195ED	115	16	52	10	10	10	10	10	10	10	10	10
72.5	135ED	120	22	88	10	10	10	10	10	10	10	10	10
81.9	135ED	120	22	88	10	10	10	10	10	10	10	10	10
81.9	165ED	115	19	67	10	10	10	10	10	10	10	10	10
81.9	195ED	115	16	52	10	10	10	10	10	10	10	10	10
91.4	135ED	120	22	88	10	10	10	10	10	10	10	10	10
91.4	165ED	115	19	67	10	10	10	10	10	10	10	10	10
91.4	195ED	115	16	52	10	10	10	10	10	10	10	10	10
101.8	135ED	120	22	88	10	10	10	10	10	10	10	10	10
101.8	165ED	115	19	67	10	10	10	10	10	10	10	10	10

Standard packing unit

ED = Extra thickness

- 1: Printing width (mm)
- 2: Screen length (mm)
- 3: Cutting length (mm)

PentaScreen®

Types Repeat (cm)	Mesh	Thickness (µm)	Open Area (%)	Hole diameter (µm)	1280	1620	1850	1850	2250	2400	2800	2800	3200
					1410	1750	1980	2080	2380	2650	2940	3050	3500
					1398.5	1738.5	1968.5		2368.5	2518.5	2918.5	2970	3418.5
64	105	105	15	94	20	20	20	20	10	10	10	10	10
64	125	100	15	79	20	20	20	20	10	10	10	10	10
64	125V	100	15	79	20	20	20	20	10	10	10	10	10
64	155	100	12	60	10	10	10	10	10	10	10	10	10
64	155XT	115	13	59	10	10	10	10	10	10	10	10	10
64	155DLH	105	7	44	5	5	5	5	5	5	5	5	5
64	185	90	11	47	10	10	10	10	10	10	10	10	10
68.8	125	100	15	79	20	20	20	20	10	10	10	10	10
68.8	155	100	12	60	10	10	10						
72.5	125	100	15	79	20	20	20	20	10	10	10	10	10
72.5	155	100	12	60	10	10	10	10	10	10	10	10	10
80.1	125	100	15	79	20	20	20	20	10	10	10	10	10
81.9	105ED	120	15	94	20	20	20	20	10	10	10	10	10
81.9	125	100	15	79	20	20	20	20	10	10	10	10	10
81.9	155	100	12	60	10	10	10	10	10	10	10	10	10
81.9	155DLH	105	7	44	10	10	10						
91.4	105ED	120	15	94	10	10	10	10	10	10	10	10	10
91.4	125	100	15	79	10	10	10	10	10	10	10	10	10
91.4	155	100	12	60	10	10	10	10	10	10	10	10	10
91.4	155DLH	105	7	44	10	10	10						
101.8	125	100	15	79	10	10	10	10	10	10	10	10	10
101.8	155	100	12	60	10	10	10	10	10	10	10	10	10

Standard packing unit

125V = Same specifications as 125 mesh, especially suitable for geometric designs (horizontal lines)

XT = Extra thickness

DLH = Small open area, suitable for transfer print

ED = Extra thickness

1: Printing width (mm)

2: Screen length (mm)

3: Cutting length (mm)

RandomScreen®

Types Repeat (cm)	Mesh	Thickness (µm)	Open Area (%)	Hole diameter (µm)	1280	1620	1850	1850	2250	2400	2800	2800	3200
					1410	1750	1980	2080	2380	2650	2940	3050	3500
					1398.5	1738.5	1968.5		2368.5	2518.5	2918.5	2970	3418.5
64	125	100	15	79	20	20	20	20	10	10	10	10	10
64	125XT	115	15	79	20	20	20	20	10	10	10	10	10
64	125	100	13	73	20	20	20	20	10	10	10	10	10

Standard packing unit

XT = Extra thickness

- 1: Printing width (mm)
- 2: Screen length (mm)
- 3: Cutting length (mm)

StandardScreen®

Types Repeat (cm)	Mesh	Thickness (µm)	Open Area (%)	Hole diameter (µm)	1280	1620	1850	1850	2250	2400	2800	2800	3200
					1410	1750	1980	2080	2380	2650	2940	3050	3500
					1398.5	1738.5	1968.5		2368.5	2518.5	2918.5	2970	3418.5
64	40	118	23	318	10	10	10	10	10	10	10	10	5
64	60	100	14	161	20	20	20	20	10	10	10	10	10
64	70	100	13	131	20	20	20	20	10	10	10	10	10
64	80	85	11	105	20	20	20	20	10	10	10	10	10
64	80ED	95	10	101	20	20	20	20	10	10	10	10	10
64	100	95	8	74	20	20	20	20	10	10	10	10	10
68.8	60	100	14	161	20	20	20	20	10	10	10	10	10
68.8	80ED	95	10	101	20	20	20	20	10	10			
72.5	60	100	14	161	20	20	20	20	10	10	10	10	10
81.9	40	118	23	318	20	20	20	20	10	10	10	10	10
81.9	60	100	14	161	20	20	20	20	10	10	10	10	10
81.9	80ED	95	10	101	20	20	20	20	10	10	10	10	10
81.9	100	95	8	74	20	20	20	20	10	10	10	10	10
91.4	40	118	23	318	10	10	10	10	10	10	10	10	10
91.4	60	100	14	161	10	10	10	10	10	10	10	10	10
91.4	80ED	95	10	101	10	10	10	10	10	10	10	10	10
91.4	100	95	8	74	10	10	10	10	10	10	10	10	10
101.8	40	118	23	318	10	10	10						
101.8	60	100	14	161	10	10	10	10	10	10	10	10	10
101.8	80ED	95	10	101	10	10	10	10	10	10	10	10	10
101.8	100	95	8	74	10	10	10	10					
168	60	100	14	161	10	10	10						
168	70	100	13	131	10	10	10						
182	70	100	13	131	10	10	10						

ED = Extra thickness

1: Printing width (mm)
2: Screen length (mm)
3: Cutting length (mm)

EffectScreen®

Types Repeat (cm)	Mesh	Thickness (µm)	Open Area (%)	Hole diameter (µm)	1280	1620	1850	1850	2250	2400	2800	2800	3200
					1410	1750	1980	2080	2380	2650	2940	3050	3500
					1398.5	1738.5	1968.5		2368.5	2518.5	2918.5	2970	3418.5
64	30	150	28	470	1	1	1	1	1	1	1	1	1
91.4	30	150	28	470	1	1	1	1	1	1	1	1	1

Large open area and relatively big holes make the EffectScreen® particularly suitable for printing particles and glitters.

1: Printing width (mm)
2: Screen length (mm)
3: Cutting length (mm)

SpecialScreens®

Technical specifications SP

Standard packing unit	Types repeat (cm)	Mesh holes (inch)	Thickness (µm)	Open area (%)	Hole diameter (µm)	Wet paste volume (cm3/m2)
1	64	14	175	66	1475	115
1	64	25	150	50	720	75
5	64	30	120	60	655	72
5	64	40	120	50	550	60
1	64	40	150	38	450	57
5	64	70	120	35	250	42
1	64	80	150	25	160	38
1	64	80	150	40	201	60
1	64	100	150	20	115	30
1	64	100	150	40	162	60
5	64	125	120	35	120	42
1	64	125	150	20	94	30
5	64	130	120	33	111	40
1	64	130	150	30	107	45
5	64	150	110	30	93	33
5	64	160	120	27	80	32
5	64	190	120	24	64	29
5	64	250	100	16	40	16
5	64	250	80	7	26	6

SP

Large open area and relatively large number of holes make the SP particularly suitable for applying decorative, patterned paste coatings.

Technical specifications LR

Standard packing unit	Types repeat (cm)	Mesh holes/ inch	Thickness (µm)	Open area (%)	Hole diameter (µm)	Wet paste volume (cm3/m2)
5	64	17	125	20	702	25
5	64	20	125	12	462	15
5	64	40	125	20	300	25
5	64	60	125	14.5	165	18
5	64	70	125	12.5	130	16
5	64	125	120	12.5	70	15
5	64	125	110	23	102	26
10	64	160	85	28	84	24
5	64	160	100	21	73	21

LR

Patterned coatings in closed layers.
Lighter coatings – artificial leather, backlit material, wallcovering and flooring.

Technical specifications HD

Standard packing unit	Types repeat (cm)	Mesh holes/ (inch)	Thickness (µm)	Open area (%)	Hole diameter (µm)	Wet paste volume (cm3/m2)
1	64	40	160	17	275	27
1	64	60	160	10	135	16
1	64	70	160	7	95	11

HD

As for LR, but greater wall thickness allows use for heavier applications and large substrates widths.

Technical specifications CH

Standard packing unit	Types repeat (cm)	Mesh holes/ (inch)	Thickness (µm)	Open area (%)	Hole diameter (µm)	Wet paste volume (cm3/m2)
1	64	40	200	22	300	44
1	64	40	200	40	400	80
1	64	50	165	41	325	68
1	64	50	200	12	175	24
1	64	50	200	20	230	40
1	64	80	200	25	160	50
1	64	125	200	25	105	50
1	91.4	40	175	22	300	39
1	91.4	40	200	22	300	44
1	91.4	60	150	43	278	65
1	91.4	60	200	11	145	22
1	91.4	60	300	10	135	30
1	91.4	80	150	25	160	38
1	91.4	80	180	25	160	50
1	91.4	125	150	20	94	30
1	91.4	125	200	25	105	50

CH

As for HX. Very stable screen wall, but usually less thick than HX. Suitable for medium-heavy applications.

SpecialScreens.

Technical specifications HX

Standard packing unit	Types repeat (cm)	Mesh holes/ (inch)	Thickness (µm)	Open area (%)	Hole diameter (µm)	Wet paste volume (cm3/m2)
1	64	14	450	40	1140	180
1	64	25	300	30	555	90
1	64	30	300	40	536	120
1	64	40	210	25	320	53
1	64	40	300	30	350	90
1	64	40	350	12	220	42
1	64	40	400	20	285	80
1	91.4	14	450	40	1140	180
1	91.4	25	300	30	555	90
1	91.4	25	300	40	643	120
1	91.4	25	450	12	355	54
1	91.4	40	300	15	245	45
1	91.4	40	300	22	300	66
1	91.4	40	300	30	350	90
1	91.4	40	350	12	220	42

HX

Heavy coating; stable and unstable foams; PVC foams on wallcovering, flooring and back coatings. Aluminium layers for sun protection, ironing board covers and protective clothing. Coating of vertical blinds.

Technical specifications CC

Standard packing unit	Types repeat (cm)	Mesh holes/ (inch)	Thickness (µm)	Open area (%)	Hole diameter (µm)	Wet paste volume (cm3/m2)
1	64	11.2	215	11	790	24
1	64	11.2	215	17.5	1000	38
1	64	14	175	13.5	700	24
1	64	14	215	11	625	24
1	64	17	175	15	600	26
1	64	17	215	11.5	530	25
1	64	23	215	13.5	425	29
1	64	25	175	18	450	32
1	64	25	200	9	320	18
1	64	25	200	14	400	28
1	64	25	215	12.5	375	27
1	64	30	215	11.5	300	25

CC

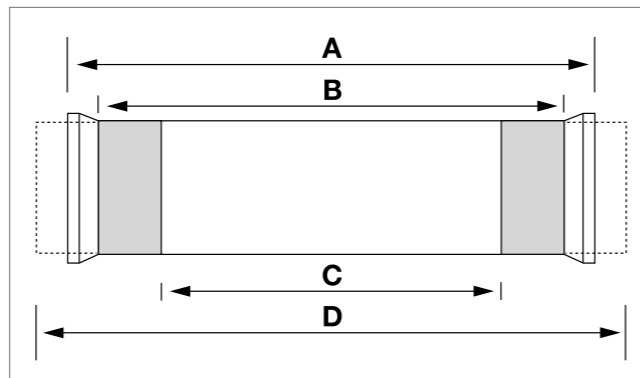
Dot coating, strengthening textile wovens and nonwovens, anti-slip dots, glue dots to strengthen automotive upholstery, glue for laminate production.

Technical specifications CP

Standard packing unit	Types repeat (cm)	Mesh holes/ (inch)	Thickness (µm)	Open area (%)	Hole diameter (µm)	Wet paste volume (cm3/m2)
1	64	23	175	12	815	21
1	64	30	200	13	745	26
1	64	30	230	7	545	16
1	64	40	220	10	565	23
1	64	40	260	8	505	20
1	64	52	195	12	540	24
1	64	66	175	7.5	375	13
1	64	76	160	12	450	19
1	64	100	200	9.6	350	19
1	64	120	175	5.9	250	10
1	64	130	180	6.4	250	12
1	64	140	200	13.5	350	27
1	64	160	250	22.1	420	55
1	64	180	200	17.3	350	35
1	64	190	175	9.3	250	16
1	64	200	180	6.3	200	11
1	64	250	215	9.5	220	16

CP

As for CC, but with random dot pattern – making CP especially suitable for applying dot coatings to interlinings. Other types can be ordered without additional tooling costs.



Possible screen lengths (mm): 1410, 1750, 1980, 2650, 3050, 3500, 3800 (other types or specifications available to special order).

- A: machine width
- B: cutting length
- C: application width
- D: screen length

Delivery program - rotary engraving chemicals®.

Product	Description	Color	Packaging
DEGREASING			
SCR 35	Liquid degreasing concentrate for rotary screens		25 kg
COATING			
SCR 100	Engraving emulsion for laser engraving	yellow - brown	4 x 5 kg
SCR 102	Engraving emulsion for laser engraving	green - blue	4 x 5 kg
SCR 110	Engraving emulsion for laser engraving	green	4 x 5 kg
SCR 63	Fine detail emulsion	red	4 x 5 kg
SCR 64	Fine detail emulsion	blue - green	4 x 5 kg
SCR 101CF	Chromium free sensitiser for SCR 100/102/110 for laser engraving		2 x 0,50 kg
C15005	Rotacoat 326Q Red – emulsion for exposing processes	red	2 x 5 kg
RETOUCHING			
SCR 52S	One component lacquer for retouching, before or after polymerisation	brown	4 x 0.25 kg
ENDRING GLUEING			
SCR 53/53C	Two component endring adhesive		1,8 kg
SCR 253	One component infra-red endring adhesive		1 kg
AUXILIARY			
SCR 30*	Liquid for removing endrings		13 kg
SCR 33	Liquid stripper for photo lacquer before polymerisation		10 kg
SCR 40	Screen cleaner for removing printing paste		20 kg
SCR 42	Thermoplast stripper		10 L
SCR 43	Thermoplast adhesive		4 kg
SCR 44	Thermoplast precoat		1 kg

* Will be replaced by SCR30+

Delivery program endrings.

NT-Type (Normal type)	Repeat (cm)	LL-Type (Longlip type)	Repeat (cm)
RD0690	68.8	RD091LL	91.4
RD0730	72.5		
RD0820	81.9	LL-Type (Longlip type) (Light version)	
RD0910	91.4	RD064LLV	64.0
RD1020	101.8		
NT-Type (Normal type) (Nickel plated)	Repeat (cm)	LL-Type (Longlip type) (Nickel plated)	Repeat (cm)
RD082K	82.0	RD091LLK	91.4
RD091K	91.4		
NT-Type (Normal type) (Light version)	Repeat (cm)	STS-Type (Screen to Screen type)	Repeat (cm)
RD0640LV	64.0	RD091STS	91.4
NT-Type (Normal type) (Light version, Nickel plated)	Repeat (cm)		
RD064LVK	64.0		

The logo for SPGPrints is displayed on a dark, modern building facade. The letters 'SPG' are in a bold, blue, sans-serif font, while 'Prints' is in a lighter, grey, sans-serif font. The building has a grid-like structure with horizontal and vertical lines.

Global network assuring the highest levels of support

Our unique history is the foundation on which we have built our strength: providing reliable, cutting-edge solutions for all your printing needs. From pre-press to rotary screens and from inks to printing systems. Thanks to our growing global presence, we understand local market needs and created an international network of manufacturing facilities with a distribution foothold in more than 100 countries. This allows us to offer our customers great service anywhere in the world.

We use our knowledge and experience to help our customers find the most suitable printing solution and optimize both their conventional as well as their digital printing process. Due to our understanding of local market needs, we are able to give specialized advice and go on long-term journeys with our customers. Together we strive to deliver a portfolio of machines, inks and screens to help you grow your business and set industry standards. Are you ready to go on that journey with us?

For more (contact) information, please visit www.spgprints.com



The data in this brochure was valid at the time of publishing, and is subject to change without notice. SPGPrints reserves the right to modify its products at any time without further obligation.